

Monthly Newsletter: **October, 2018**



**KNOWLEDGE IS MY
SUPERPOWER**

CONTACT US

- Find out how to get a free or low-cost mammogram.
- Find out about breast cancer programs in your community.
- Talk to someone who has been there.

800.877.8077
breast-cancer.adelphi.edu

ADELPHI
NY
STATEWIDE
BREAST CANCER HOTLINE
& SUPPORT PROGRAM
800.877.8077

f t in p

**Register for the
Celebration of Survivorship 2018**

**ADELPHI NEW YORK STATEWIDE
BREAST CANCER HOTLINE & SUPPORT PROGRAM**

You are invited to a

Celebration of Survivorship

Thursday, October 18, 2018

Doors Open - 6:00 p.m. (raffles available)



Celebration of Survivorship
Thursday, October 18, 2018
Ruth S. Harley University Center Ballroom
Adelphi University, Garden City, NY

Doors Open - 6:00 p.m. (***raffles available***)
Speakers - 7:00 p.m.

A light supper will be served

HONORING

Kat's Ribbon of Hope

SPEAKERS

JEFFREY FLYNN- 6 year survivor
Volunteer, Former Support Group Member

SUE LEACH - 1.5 year survivor
Support Group Member

GERALYN LUCAS - 23 year survivor
Author

SONIA AVERY-WILLIAMS, RN - 3 year survivor
Former Support Group Member

[Click here](#) to read about our celebration speakers

Please register by October 8, 2018

- Register **online**
- Register by phone **516-877-4325** or

- Register by e-mail: breastcancerhotline@adelphi.edu

CELEBRATION JOURNAL

A commemorative journal, to support the work of **Adelphi Breast Cancer Program** will be printed and distributed the evening of the Celebration of Survivorship.

Time is running out!!!

Click here for more information and to reserve space in our journal.

THANK YOU TO OUR GENEROUS DONORS!
We appreciate your support.

Join a Support Group

On-going support groups



We offer weekly, bi-weekly and monthly meetings: charge. All groups are facilitated by a social work master level social work intern. Our support groups include: **General Support Group, Caregivers of people with Breast Cancer, Young Women Under 40 (an online support group), Newly Diagnosed Stage 4** and our **Touchstone: Boo group**.

NEW: Join our new **online** support group for Young Women with Breast Cancer. Meeting online, Tuesdays at 6 pm. [Read more](#)

We also have a **Cafecito group** which is for Spanish speaking women with breast cancer.

>> [Support Group Schedule](#)

For more information, questions and to sign up, call **Erin Nau, LCSW** Counseling & Education Coordinator at **516-877-4314** or enau@adelphi.edu

For more information on the **Cafecito group** and to sign up, call **Angela M. Papalia, LMSW** Bilingual Social Worker at **516-877-4329** or apapalia@adelphi.edu

You can also call the Breast Cancer Hotline at **800-877-8077**.

Forums

All forums are **FREE** and open to the public. All forums are held at the Alumni House at Adelphi University (154 Cambridge Avenue, Garden City).

Seating is limited. Reservations are required.

Save The Date

Breast Reconstruction Forum

November 27, 2018

More information to follow

Cancer & Careers Forum

December 11, 2018

More information to follow

Please [click here](#) to see our upcoming forum schedule.

If you missed our forums, they can be watched
on our [YOUTUBE](#) channel at anytime.

UPCOMING EVENTS

AMERICANA MANHASSET
CHAMPIONS
FOR CHARITY®

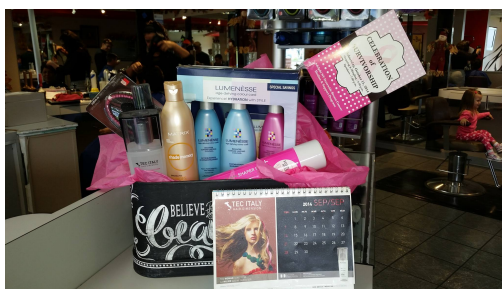
The Adelphi Breast Cancer Program to participate in
Americana Manhasset's Champions for Charity®

Dates:

Thursday, November 29, 2018 - Saturday, December 1, 2018 (10 a.m. - 8 p.m.)
Sunday, December 2, 2018 (11 a.m. - 6 p.m.)

Over 70 participating Americana Manhasset and select Wheatley Plaza stores will donate designated full-price pre-tax purchases to the participating organization(s) of the customer's choice. Purchases are not automatically eligible; you must register for a complimentary Champion Number, designate "name of organization" as your charity of choice, and provide your Champion Number when making purchases during the event.

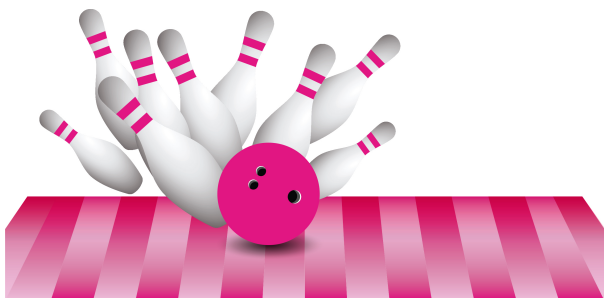
For more information visit championsforcharity.org
or call 800.818.6767. **Registration begins October 15, 2018.**

SIR JOHN'S BEAUTY SALON

This October **Sir John's Beauty Salon** in West Babylon is having a raffle to support The Adelphi Breast Program. Visit the salon and purchase a \$5 raffle ticket to win an amazing basket of hair goodies. The raffle will take place on November 1st.

Sir John's Haircutters
957 Little E. Neck Road
West Babylon, NY 11704
www.sirjohnsbeautysalon.com

**3rd Annual
LET'S "GLOW" BOWLING - NEW LOCATION****Help Strike Out Breast Cancer**



Jean Rettura a volunteer with The Adelphi Breast Cancer Hotline & Support Program has organized the bowling fundraiser to benefit the program. We hope you will join us for an afternoon of fun and great c

Date: Saturday, November 3, 2018

Time: 1 - 4 p.m.

Place: San-Dee Lanes
342 Hempstead Avenue
Malverne, New York 11565
(516) 599-1134
www.sandeelanes.com

Cost: \$30.00 per person which includes:

- 3 hours of bowling
- bowling shoes
- food and refreshments

There will also be a 50/50 raffle and a chinese auction

PRE-REGISTRATION IS REQUIRED

Registration/Payment must be received no later than October 29, 2018

1. You can register online by visiting **<http://breast-cancer.adelphi.edu>** or by calling 516-877-4325 (please leave your name, number and the amount of bowlers)
2. Payment must be made in advance.
Payment must be received by
Monday, October 29, 2018
The cost to attend the event is \$30/per person
3. Make your check payable to: Jean Rettura

Mail your check to:
Jean Rettura
724 Herzel Blvd.
West Babylon, NY 11704

SPUNTINO

WINE BAR & ITALIAN TAPAS

Spuntino Wine Bar & Italian Tapas will be donating \$1.00 for every glass sold during the month of October for the following items - Brezette rosé, Wolffer rosé and Rosé Sangria.

Spuntino

The Gallery at Westbury

1002 Old Country Road

Garden City, NY 11530

Tel: (516) 228-5400

<http://spuntinowinebar.com/westbury/>

Help Support our Program. Your contributions are essential.



Dear _____

We gratefully acknowledge a contribution

from

which helps support the work of the

ADELPHI NY STATEWIDE BREAST CANCER
HOTLINE & SUPPORT PROGRAM

800.877.8077

breast-cancer.adelphi.edu



DONATE

Go beyond the usual gift rotation and make a meaningful donation to the **Adelphi NY Statewide Bre Hotline & Support Program**. Your donation goes directly to help support our program.

WAYS TO DONATE...

- in honor of a friend or a loved one
- in memory of a friend or a loved one
- to celebrate a birthday or life event

Once your donation is received, we will send the card above to the honoree or family acknowledging yc

Thank you to everyone who donated in SEPTEMBER

Advantage Title Agency

Richard Belson

Maria Bonventre

Michael Buccolo

William Burnette in honor of Marcia Partridge

Jaclyn Composto in memory of Val Fitzgerald

Virginia Coughlin in memory of Elizabeth McFarland

Al & Peggy DeMatteis Family Foundation

Christina Demosthenous

Lauren Donner in honor of Marcia Partridge

Diane Edelman

Marni Rothman Ellis in honor of Marcia Partridge

Nick Ferrelli, Ken Herold & Adelphi Libraries

Jeff Fertel in honor of Marcia Partridge

Fifth Avenue of LI Realty Associates

Les Hoffman

Keith Johnson in honor of Marcia Partridge

Debra & Jeff Langendorff

Debra & Jeff Langendorff in honor of Daniel Machado

Andrew Lane in honor of Marcia Partridge

LIPSG - Dr. Noel Natoli - Long Island Plastic Surgical
Carolyn Longo in memory of Bernard Longo
Jordan & Lindsay Mallari in honor of Marcia Partridge
Diane Marcus in honor of Marcia Partridge
Kelly McDonald in honor of Marcia Partridge
Holly Minott in memory of Lillian Singer
Catherine Negroni
Elaine Pasquali
James Petrillo in honor of Jean Rettura
Genevieve Picone in memory of Ralph & Theresa DePaola
The Plastic Surgery Foundation
Judy Platt
Laura Porsch
The Quacker Jack Foundation
Anne Rattinger
Amanda Rosen in honor of Marcia Partridge
Renie Rosenbaum
Mary Russo
Hillary & Steve Rutter
Gabrielle Salvatore-Barba in honor of Marcia Partridge
Theresa & Frank Scotti
Alice Soler
Linda Sanchez
Beatrice Valenti
Philip & Margaret Volz in memory of Maureen Keating

Research Opportunities



Please use the contact information listed for each research project you are interested in participating.

Have Your Voice Heard

Are you a current or former participant in a Breast Cancer Support Group?

Participate in a Research Study and share your experiences in Breast Cancer Support Groups.

This study is open to men and women 18 years and older who have participated in a breast support group.

This survey is being conducted by Erin Nau, LCSW and Hillary Rutter, LCSW of the Adelphi North Breast Cancer Hotline & Support Program.

>> [For more information and to participate in this study](#)

Community Healthcare Survey

In order for **Stony Brook Medicine** to best serve the needs of the community, they would like to hear from you. This survey contains questions about challenges you may face regarding healthcare. The survey will only take five minutes to complete.

Your answers will provide insight on ways to improve patient care and procedures to more effectively address the needs of the community.

>> [Click here to participate in this survey](#)

Sisters United In Health



SISTERS UNITED IN HEALTH
An initiative for breast health information.

WE CAN...

- Help you get a free or low-cost mammogram
REGARDLESS OF YOUR HEALTH INSURANCE OR IMMIGRATION STATUS
- Answer your breast health and breast cancer questions and provide educational resources
- Provide breast health workshops at no cost.
- Available in English and Spanish.

Like the [Sisters United in Health](#) facebook page.

For more information call Sisters United in Health at 800.559.6348 or [click here](#) to learn more.

Happy Birthday to our volunteers

We would like to wish a Happy Birthday to all our volunteers with a **OCTOBER Birthday.**



Diane G.
Maria B.

Let's Stay in Touch

The number for our hotline is 800-877-8077



Follow us on **Social Media** and see photos of our wonderful volunteers at our events, stay up-to-date on programs, forums and support groups. Read news and new study's on breast cancer, read inspiring stories from our volunteers, watch events live on facebook and see the wonderful people and businesses that support

[Facebook](#)

[Twitter](#)

[Pinterest](#)

[YouTube](#)

Online Chat

Did you know we have a **LIVE CHAT** feature on our website. Chat with a breast cancer survivor social worker.



Thank you to all our sponsors

We would like to say thank you to all our amazing sponsors.
(listed below in alphabetical order)

Alpern Family Foundation Inc.

The Beth C. Tortolani Foundation

Kat's Ribbon of Hope

LI2Day

Manhasset Women's Coalition Against Breast Cancer

The Junior Coalition of the Manhasset Women's Coalition Against Breast Cancer

Nassau County Women's Bar Foundation

NYS Department of Health

Pink Aid

Plastic Surgery Foundation

Please visit our website at breast-cancer.adelphi.edu
Donate to our cause at breast-cancer.adelphi.edu/donate
