

**ADELPHI NY STATEWIDE
BREAST CANCER HOTLINE & SUPPORT PROGRAM**

800.877.8077 • breast-cancer.adelphi.edu



Monthly Newsletter - October 2022

**-2022-
*Celebration
of Survivorship***

Thursday, October 20, 2022

Celebration of Survivorship

Thursday, October 20, 2022 (4:00 - 5:30 pm)

Join us



**-2022-
*Celebration
of Survivorship***

Thursday, October 20, 2022

4:00 - 5:30 pm

**at the Ruth S. Harley University Center Ballroom
Adelphi University, Garden City, NY**

Join us in person from 4:00 pm - 5:30 pm
at the Ruth S. Harley University Center Ballroom
Adelphi University, Garden City, NY

Space is limited to 125 participants! Register today to reserve your spot.
Light refreshments will be available.

As the event is held indoors, masks will be required. In the event COVID-19 cases rise and we are unable to meet in-person, we will pivot to a virtual event.

[Click Here](#) to register for the event.

Speakers For The Evening



SANDRA ALLEYNE
Diagnosed in 2011



BRIDGET DESIMONE
Diagnosed in 2018



VILDA ALBERTO PONCE
Diagnosed in 2021

***This presentation will be conducted with simultaneous interpretation (Spanish/English)**



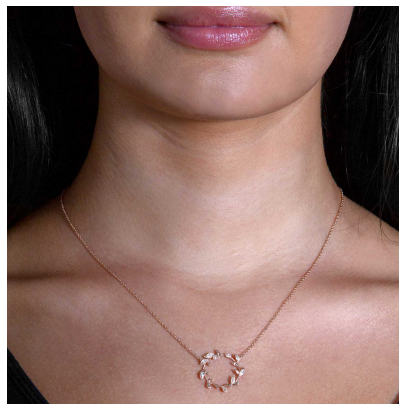
JANET SPOOL
Diagnosed in 2016

Celebration of Survivorship - Raffle Item

RAFFLE TICKET PRICES: 1 for \$20.00

Tickets can be purchased by **check or credit card only.**

[Click Here](#) to purchase raffle tickets!



DIAMOND WREATH NECKLACE, 14K ROSE GOLD

Simply pretty, 14 karat rose gold necklace on adjustable chain, set with diamonds from Fortunoff Fine Jewelry.

- 14 karat rose gold
- Diamonds total .08 carat
- Diamond quality: H/I color, SI clarity
- Wreath diameter .75 inch
- Length 18 inches, with rings at 16 and 17 inches
- Spring ring closure
- Imported

NOTE: The raffle winner will be announced at our Celebration of Survivorship event on Thursday, October 20, 2022 at 4:00 pm. Winners do not need to be present. However, your prize must be picked up at Adelphi University by October 27, 2022 or the prize will be given to the runner up.

Celebration of Survivorship - Journal

[Click Here](#) to reserve your ad space!

This event is free but your support is EVERYTHING!

All ads must be received by **October 3, 2022.**

- **Full Page** (5.5"w x 8.5"h) **\$200.00**
(Educational Forums)
 - **Half Page** (5.5"w x 4.25"h) **\$100.00**
(One hour session with a social worker (English or Spanish))
 - **Quarter Page** (2.75"w x 4.25"h) **\$50.00**
(Food card for an underserved breast cancer patient)
 - **Listing in Journal** **\$25.00**
(Gift card for an underserved woman at the completion of her mammogram)
-

Celebration of Survivorship - Sponsorship Opportunities

[Click Here](#)

Visionary \$5,000

- Company name and logo will be listed as an official event sponsor in our digital journal. Please send us a blurb about your company to be included in the journal. You will also receive a **full page ad on the back inside cover** (5.5w x 8.5h), ***please note all ads must be submitted***

by October 3, 2022. Submit camera-ready artwork. E-mail a PDF or .jpg to knewman@adelphi.edu. If you need assistance with your ad design, please contact Kim Newman at knewman@adelphi.edu.

- Full-color large logo to be displayed on the event webpage with a link to the company website.
- Social media promotion with tags, posts, mentions (on one post per week in October). ***After receiving sponsorship payment until the date of the event.**
- Company will be listed in the event press release (**payment must be submitted by September 15, 2022**).
- Company logo to be listed on promotional emails. ***Promotional emails will contain company name after receiving sponsorship payment.**
- Reserved seating for four guests to attend.
- Recognition at event podium during the event.

Ambassador \$2,500

- Company name and logo will be listed as an official event sponsor in our digital journal. Please send us a blurb about your company to be included in the journal. You will also receive a **full page ad** (5.5w x 8.5h), **please note all ads must be submitted by October 3, 2022.** Submit camera-ready artwork. E-mail a PDF or .jpg to knewman@adelphi.edu. If you need assistance with your ad design, please contact Kim Newman at knewman@adelphi.edu.
- Full-color medium sized logo to be displayed on the event webpage with a link to the company website.
- Social media promotion with tags, posts, mentions (on one post per week in October). ***After receiving sponsorship payment until the date of the event.**
- Company will be listed in the event press release (**payment must be submitted by September 15, 2022**).
- Company logo to be listed on promotional emails ***Promotional emails will contain company name after receiving sponsorship payment.**
- Reserved seating for two guests to attend.

Ally \$1,000

- Company name and logo will be listed as an official event sponsor in our digital journal. Please send us a blurb about your company to be included in the journal. You will also receive a **full page ad** (5.5w x 8.5h), **please note all ads must be submitted by October 3, 2022.** Submit camera-ready artwork. E-mail a PDF or .jpg to knewman@adelphi.edu. If you need assistance with your ad design, please contact Kim Newman at knewman@adelphi.edu.
- Full-color small logo to be displayed on the event webpage with a link to the company website.
- Social media promotion with tags, posts, mentions (on two posts in October). ***After receiving sponsorship payment until the date of the event.**
- Company will be listed in the event press release (**payment must be submitted by September 15, 2022**).
- Company name to be listed on promotional emails. ***Promotional emails will contain company name after receiving sponsorship payment.**

Supporter \$500

- Company name and logo will be listed as an official event sponsor in our digital journal. Please send us a blurb about your company to be included in the journal. You will also receive a **full**

page ad (5.5w x 8.5h), ***please note all ads must be submitted by October 3, 2022.*** Submit camera-ready artwork. E-mail a PDF or .jpg to knewman@adelphi.edu . If you need assistance with your ad design, please contact Kim Newman at knewman@adelphi.edu.

- Company name to be displayed on the event webpage.
- Social media promotion with tag, post, and mention (on one post in October). ****After receiving sponsorship payment.***
- Company name to be listed on promotional emails ****Promotional emails will contain company name after receiving sponsorship payment.***

Thank you to our 2022 Celebration of Survivorship Sponsors

-Signature Sponsor-



-Ally Sponsor-

fortunoff
FINE JEWELRY

-Supporter Sponsor-

The DeMatteis Family

Forums



SAVE THE DATE

Spirituality, Faith and Breast Cancer: Finding Your Path and Inner Strength

Join us for a special program to hear from four exceptional leaders within the Spiritual and professional community as we explore ways to draw strength during one's journey with breast cancer.

Date: Monday, November 14th, 2022

Time: 4 p.m.

This program will take place over **ZOOM**.
All registered guests will receive the link via email.

Speaker details will be announced soon!

[Click here](#) to register for the forum

If you have missed any of our past forums, please visit our **[YouTube](#)** channel to watch the videos.

*Our 2022 forums are sponsored by
The Junior Coalition of the Manhasset Women's Coalition Against Breast Cancer,
and Northwell Health Cancer Institute.*

Support Groups

ALL COUNSELING AND SUPPORT GROUPS ARE BEING OFFERED
OVER THE PHONE AND ONLINE



8-week support groups now forming for the Fall.

[Click here](#) to see our support group schedule.

For more information, questions and to register for a support group, call **800-877-8077** or email **breastcancerhotline@adelphi.edu** to pre-register. Pre-registration is required.

All groups are facilitated by a licensed social worker.

These groups are provided by the Adelphi Breast Cancer Program and supported by grants from the Alpern Family Foundation, Kat's Ribbon of Hope, Marilyn Lichtman Foundation, the Mother Cabrini Health Foundation, New York State and Pink Aid.

****NOW FORMING - Reserve your spot by 10/5****

THE LOTUS CIRCLE

The Lotus Circle welcomes women who are newly diagnosed with breast cancer and undergoing treatment. The 8-week group seeks to provide a safe space for participants to discuss their diagnosis and explore helpful ways to rise from the challenges of a breast cancer diagnosis.

For more information and to register, call Adriana Valencia, LMSW (516) 877-4371.

This is an online group that will be meeting on Zoom.



RECURRENCE SUPPORT GROUP

Women who have experienced a recurrence with breast cancer will have the opportunity to meet with others in similar situations and provide and receive support.

UNDER 40, YOUNG WOMEN'S GROUP

Women under the age of 40 who are diagnosed with breast cancer have particular needs. This support group will focus on those concerns while allowing the members to share their feelings in a safe supportive environment.

SUPPORT FOR STAGE 4 BREAST CANCER

Individuals with Stage 4 Metastatic Breast Cancer will meet to share information, feelings, hopes, and coping strategies.

SUPPORT GROUPS FOR SPANISH SPEAKING WOMEN

Call Adriana Valencia, LMSW (516) 877-4371.

Llame a Adriana Valencia, LMSW (516) 877-4371.

Cafecito

Cafecito is a Spanish language support group for survivors of breast cancer who are post-treatment.

Cafecito

Cafecito es un grupo de apoyo en español para sobrevivientes de cáncer del seno que han terminado su tratamiento de quimioterapia o radiación.

Para Nuestro Bienestar

Para Nuestro Bienestar is a Spanish language support group for newly diagnosed women with breast cancer. If you have been diagnosed within the last 18 months, this group offers a safe and confidential space where we can help you identify, accept and express the feelings you may be experiencing with your diagnosis.

Para Nuestro Bienestar

Para Nuestro Bienestar es un grupo de apoyo en español para mujeres recién diagnosticadas con cáncer de mama. Si ha sido diagnosticado en los últimos 18 meses, este grupo ofrece un espacio seguro y confidencial donde podemos ayudarle a identificar, aceptar y expresar los sentimientos que pueda estar experimentando con su diagnóstico.

HELP SUPPORT US THIS OCTOBER

Throughout Breast Cancer Awareness Month help support the Adelphi Breast Cancer Program.

HARRISON STRENGTH AND FITNESS



Join us on **Saturday, October 15th, 2022** for an amazing, in-person workout at **HARRISON STRENGTH & FITNESS**, located at 75 Calvert Street in Harrison, New York (www.harrisonstrength.com) at 9 a.m.

To participate in this special fundraising event, we are asking that a donation be made to the **Adelphi NY Statewide Breast Cancer Program** in honor of Breast Cancer Awareness. Our expert trainers will provide you with an invigorating workout that will help you feel great and support an amazing cause!

To sign up for the event, we ask all attendees to kindly use the **MindBody platform** to register for their heat. It will be free to book a time slot for the event after you download the MindBody app (www.mindbodyonline.com). Heats are first come first served.

Can't make it that day? Click here to make a donation in honor of a breast cancer warrior!

Questions? Contact Angela Papalia LMSW, apapalia@adelphi.edu

HOW TO DONATE ONLINE:

- **VISIT:** Click here for the Donation Page
- **DONATION AMOUNT:** Enter the total of your donation in the box.
- **DONATION FREQUENCY:** Make sure Give Now is selected.
- **DESIGNATIONS:** Make sure you click on the Breast Cancer Program box. It will turn yellow once it's selected.
- **DONOR/CONTACT INFORMATION:** Fill out your personal information.
- **ADDITIONAL OPTIONS:** Choose event drop down box and in the box write "HSF BCA Fundraiser."

HOW TO PAY WITH A CHECK:

Please make your check payable to: The Adelphi Breast Cancer Program

Mail your check to:

The Adelphi Breast Cancer Program

1 South Avenue, PO Box 701

Garden City, NY 11530

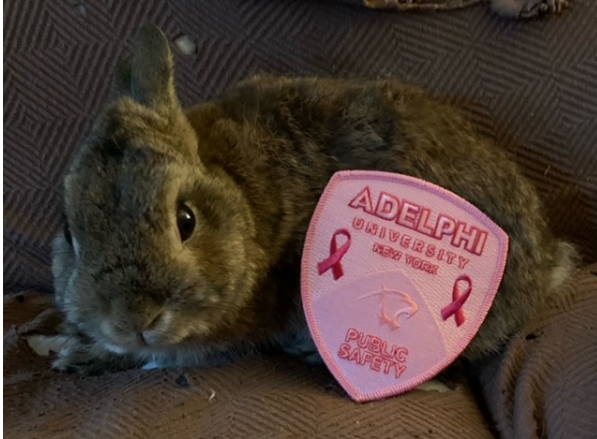
****Please include "HSF BCA Fundraiser" in the memo section****

11th ANNIVERSARY - PINK PUMPKINS

Each October, **Diane Turcic** of Franklin Square decorates pink pumpkins and sells them at the Unitarian Universalist Church in Garden City. The sale of these beautiful Pink Pumpkins benefits the **Adelphi NY Statewide Breast Cancer Hotline & Support Program**.

Visit the pink pumpkin patch on **Saturday, October 15** from **12 to 5 pm**. The church is located at the corner of Nassau Blvd and Stewart Avenue Garden City (223 Stewart Ave, Garden City, NY 11530).

PINK PATCH PROJECT 2022



Adelphi University Public Safety has teamed up with the Adelphi NY Statewide Breast Cancer Hotline & Support Program to promote Breast Cancer Awareness Month. With your **donation** to the Adelphi Breast Cancer Program, you will receive a pink uniform patch. All proceeds will be donated to the Adelphi Breast Cancer Program.

The Pink Patches will be available throughout the month of October, while supplies last, by visiting Adelphi University Public Safety in Levermore Hall, Room 113. **With any donation amount you will receive a Pink Patch.**

For more information contact: SGT. Lennon at (516) 877-3499 or email: Glennon@adelphi.edu.



FORTUNOFF POWER OF PINK

POWER OF PINK

Fortunoff Jewelry is proud to support the fight against breast cancer.

SAVE 10% OFF the Power Of Pink jewelry collection plus
Fortunoff Jewelry will donate 10% of purchases
to support the Adelphi Breast Cancer Hotline.

Fortunoff Fine Jewelry has assembled a “**Power of Pink**” collection of beautiful jewelry, the sale of which will support our program. Save **10% Off** the Power of Pink Collection plus Fortunoff Jewelry will donate **10%** of purchases made in October to support the Adelphi Breast Cancer Program.

Click here to view the collection.

The logo for Fortunoff Fine Jewelry features the word "fortunoff" in a large, bold, blue serif font. Below it, the words "FINE JEWELRY" are written in a smaller, blue, all-caps sans-serif font. The entire logo is set against a light gray rectangular background.

fortunoff
FINE JEWELRY

Register Today - Online Creative Arts Workshop



**Join us on zoom for (4) consecutive Thursdays from 10:00 am - 11:30 am.
(October 27, November 3, November 10 and November 17, 2022.)**

Our (4) week creative arts workshops empower participants to express themselves using art. This therapeutic program offers a safe place to communicate your thoughts, feelings, concerns, problems, hopes and dreams. Our professional staff will guide you through different exercises and discussions helping you to find ways to gain personal insight and develop new coping skills. Our **Mindfulness & Spirituality workshop** will help you stay focused and aware of the present moment while exploring the relationship between spirituality, healing and art.

For more information and to register for a workshop, please call **Angela M. Papalia, LMSW** at **(516) 877-4329** or email **apapalia@adelphi.edu**.

Our creative arts workshops are facilitated by **Angela M. Papalia, LMSW**, Assistant Director for the Adelphi Breast Cancer Program along with **Kimberly Newman, BFA**, Communications and Marketing Coordinator for the Adelphi Breast Cancer Program.

All groups are free but registration is required. **Register by October 14th.**

Volunteer Training

Breast Cancer Survivors Sought for Hotline and Outreach

The Adelphi NY Statewide Breast Cancer Hotline & Support Program welcomes both women and men who have had breast cancer to become volunteers. If you are interested in



volunteering and would like to be a part of our next training, please contact:

Nina Foley, LMSW,
Volunteer and Hotline Coordinator

Phone: 516.877.4315

Email: Nfoley@adelphi.edu



**Our next Volunteer Training will take place on
4 consecutive Tuesdays, starting on November 1st.**

News and Press Releases

Program Highlights



Mindfulness & Spirituality Workshop through Art for Breast Cancer Survivors. Register by October 14

September 15, 2022

The Adelphi NY Statewide Breast Cancer Program is offering a free four-session creative arts workshop empowering breast cancer survivors to express themselves using art. This therapeutic program offers a safe place to communicate thoughts, feelings, concerns, problems, hopes and dreams. The professional staff guides participants through different exercises and discussions helping to find ways to gain personal insight and develop new coping skills.

[Click here](#) to read the article.

Pink Pumpkins in Garden City

September 27, 2022

This year is the 11th anniversary of the **Pink Pumpkin** sale to benefit the Adelphi NY Statewide Breast Cancer Hotline & Support Program.

Diane Turcic of Franklin Square decorates pink pumpkins and sells them at the Unitarian Universalist Church in Garden City every October in a little spot amongst their orange pumpkin patch. Diane will bring her pumpkins on **Saturday, October 15** and is there from **12 to 5 pm**, although she usually sells out before the time is over.

[Click here](#) to read the article.

Breast Cancer Hotline Volunteers Sought 4-Session training in November

September 29, 2022

Breast cancer survivors can help others coping with breast cancer by becoming volunteers with the Adelphi NY Statewide Breast Cancer Hotline & Support Program. The four-day training program will take place on consecutive Tuesdays in November (**November 1, 8, 15 and 22**) from **10 am to 1 pm on zoom**. Attendance at all four sessions is necessary.

[Click here](#) to read the article.

READ MORE

**The Adelphi Breast Cancer Program
wishes our volunteers
the happiest of birthdays!**



Research Opportunitites

The STOP breast cancer clinical trial – [Stony Brook Medicine](#)
Are you Postmenopausal? Do you have Dense Breasts?

Research suggests that women with dense breasts are more likely to develop breast cancer. This study will test if anti-inflammatory drugs are able to reduce breast density and help us understand why breast density is linked to breast cancer development. This study is sponsored by the National Cancer Institute.

If interested, please contact us at **(631) SB-Trial** (728-7425) or CancerClinicalTrials@stonybrookmedicine.edu

Please [click here](#) to see the flyer.

Do you have breast cancer or are you a survivor? Do you live in Nassau County, NY?

Students from Molloy College are conducting a research project. This study plans to examine the connection between breast cancer diagnosis and treatment in relation to COVID-19.

If you currently have Breast Cancer are a Survivor or are in Remission, we invite you to participate in an anonymous 5 -15 minute survey about your experience with Breast Cancer during COVID-19.

Why Complete The Survey? Your responses will help the scientific community improve breast cancer care during the COVID-19 Pandemic?

PLEASE CLICK THE APPROPRIATE SURVEY LINK BELOW

Patients/Currently Undergoing Treatment: <https://forms.gle/xPveAXvtEGESZS3M7>

In Remission: <https://forms.gle/22vmcWo37XWEQqok7>

If you have any questions, please email molloyresearch2021@gmail.com



ANY QUESTIONS EMAIL:
MolloyResearch2021@gmail.com

BREAST CANCER

DO YOU HAVE BREAST CANCER OR ARE YOU A SURVIVOR?
DO YOU LIVE IN NASSAU COUNTY, NY?

If you currently have Breast Cancer OR are a Survivor OR in Remission, WE invite you to participate in an ANONYMOUS 5-15 minute survey about YOUR EXPERIENCE with Breast Cancer during COVID-19.

In Remission
<https://forms.gle/22vmcWo37XWEQqok7>

Patients/Currently Undergoing Treatment
<https://forms.gle/xPveAXvtEGESZS3M7>

WHY COMPLETE THE SURVEY?
YOUR RESPONSES WILL HELP THE SCIENTIFIC COMMUNITY IMPROVE BREAST CANCER CARE DURING THE COVID-19 PANDEMIC!!

AS STUDENTS OF MOLLOY COLLEGE, WE THANK YOU!

Coronavirus
(COVID-19)

DONATE

[Click here](#) to help support the **Adelphi Breast Cancer Program**. Without funding, our program will no longer be able to provide life-saving services to those who are truly in need. Please make a tax-deductible donation today, so that we may be there for the breast cancer community.

Facebook

FACEBOOK FUNDRAISERS

Did you know that you can host a fundraiser through your Facebook page to benefit our program? All funds raised through Facebook go directly to our program.

Ideas for Facebook Fundraisers:

Birthday's, Anniversary's, Holiday Gifts, Runs, Bike Rides, Walks, Pink Ribbon, etc.

Learn how you can setup your own facebook fundraiser to benefit the Adelphi Breast Cancer Program.

[Click here](#) to watch a video with step by step instructions.

Let's Stay In Touch

Contact our Hotline, Visit our Website, Follow us on Social Media

Follow us on Social Media and online to see photos of our wonderful volunteers at our outreach events, stay up-to-date on programs, forums and support groups. Read news articles and new studies on breast cancer, read inspiring stories from our volunteers, watch our events live on facebook and see the wonderful people and businesses that support us.

SOCIAL MEDIA

[facebook](#), [twitter](#), [pinterest](#), [youtube](#), [instagram](#)

WEBSITE

[breast-cancer.adelphi.edu](#)

ONLINE CHAT

Did you know we have a [LIVE CHAT](#) feature on our website. Chat with a breast cancer survivor or social worker.

HOTLINE

800.877.8077 - We are here for you 365 days a year!



Thank you to all our sponsors

(Listed below in alphabetical order)

Alpern Family Foundation Inc.

Kat's Ribbon of Hope

Manhasset Women's Coalition Against Breast Cancer

The Junior Coalition of the Manhasset Women's Coalition Against Breast Cancer

The Marilyn Lichtman Foundation

The Mother Cabrini Health Foundation

Nassau County Office for Housing and

Community Development

New York State

Northwell Health Cancer Institute

Pink Aid

Plastic Surgery Foundation
