

# 2024

# The Year in Review



## What a Year!

The Adelphi NY Statewide Breast Cancer Hotline & Support Program would like to thank our Advisory Board, staff, volunteers, and community partners for making the past year brighter.

**Wishing you and your family a happy and healthy holiday season!**

## We are here for you 365 days a year!

Breast Cancer does not take a break for the holidays.  
We are here for you **365** days a year.



For assistance, please contact us by phone, email or web.

**call** our hotline: **800.877.8077**

**email** our program at: [breastcancerhotline@adelphi.edu](mailto:breastcancerhotline@adelphi.edu)

**visit** our website: [breast-cancer.adelphi.edu](http://breast-cancer.adelphi.edu)

**You are not alone.**

---

JOIN US FOR  
**GI**  **ING TUESDAY**  
**DECEMBER 03, 2024**

**#GivingTuesday** is a global day of generosity taking place on December 3rd. GivingTuesday was created in 2012 as a simple idea: a day that encourages people to do good. The **Adelphi NY Statewide Breast Cancer Hotline & Support Program** is proud to be a part of this global celebration of giving that empowers people to give, collaborate, and celebrate generosity.

**Please consider donating to the Adelphi Breast Cancer Program this #GivingTuesday!**

**Can't wait till December 3rd, start giving today!**

**GIVE NOW!**

---

**The Warriors Book Club Meetings**

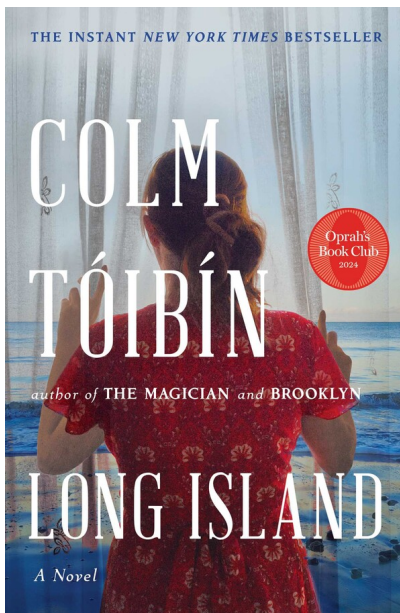


Participation in our **Warriors Book Club** will provide you with a wonderful, feel-good, uplifting and inspirational experience! The purpose of the Warriors Book Club is to support people in the community impacted by Breast Cancer.

**Monday, December 16, 2024**

**Join us on zoom from 7:00 pm - 8:00 pm**

**The book we will be discussing on December 16th is:  
Long Island by Colm Tóibín**



From the beloved, critically acclaimed New York Times bestselling author comes a spectacularly moving and intense novel of secrecy, misunderstanding, and love, the story of Eilis Lacey, the complex and enigmatic heroine of Brooklyn, Tóibín's most popular work, twenty years later.

**REGISTRATION:** For more information and to register for our **December 16, 2024** Warriors Book Club Meeting on zoom, please contact Nina Foley, LCSW at **516-877-4315** or email [nfoley@adelphi.edu](mailto:nfoley@adelphi.edu).

---



[Click here](#) to see our support group schedule.

To participate in one of the listed support groups please call our Hotline at **800.877.8077** or email [breastcancerhotline@adelphi.edu](mailto:breastcancerhotline@adelphi.edu) to pre-register. **All groups are free** but registration is required. *All groups are facilitated by a licensed social worker.*

**If you are interested in a support group or service that is not listed, please contact Nina Foley LCSW: [nfoley@adelphi.edu](mailto:nfoley@adelphi.edu).**

All groups are facilitated by a licensed social worker of the Adelphi Breast Cancer Program. These programs are supported by grants from the Alpern Family Foundation, Kat's Ribbon of Hope, Marilyn Lichtman Foundation, New York State, Northwell Health Cancer Institute and Pink Aid.

---

### ***Drop-In Support Group – Virtual***

**Young Women's Drop-In Support Group – Under 45 years of age \*Virtual**

This group will address the unique needs of young women with breast cancer and will meet via zoom on Tuesdays from 7 p.m. – 8 p.m. on the following dates: 12/10/24, 12/17/24, 1/7/25, 1/21/25, 2/4/25 and 2/18/25.

**To register & to receive the zoom link, please contact Nina Foley LCSW at: 516.877.4315 or [nfoley@adelphi.edu](mailto:nfoley@adelphi.edu).**

---

### ***Drop-In Support Group – Virtual***

**Newly Diagnosed Drop-In Support Group – \*Virtual\***

This group is for women who are newly diagnosed with breast cancer and will meet via zoom on Fridays from 12 p.m. – 1 p.m. on the following dates: 12/6/24, 12/20/24, 1/3/25, 1/17/25, 1/31/25, 2/14/25, and 2/28/25.

**To register & to receive the zoom link, please contact Angela Papalia LMSW at: 516.877.4329 or [apapalia@adelphi.edu](mailto:apapalia@adelphi.edu).**

---

### ***Ongoing Support Group – Virtual***

**Stage 4 Breast Cancer Support Group – \*Virtual\***

Men and women with Stage 4 Metastatic Breast Cancer are welcome to join an ongoing twice-monthly group via zoom to share information, feelings, hopes and coping strategies.

*For more information and to register, call Lois Goetz, LMSW, ACSW  
(516) 877-4347 or [goetz@adelphi.edu](mailto:goetz@adelphi.edu).*

---

### ***New Support Group – Virtual***

#### **Hormone Therapy Support Group (Now Forming) – \*Virtual\***

Ongoing, bi-weekly support group for breast cancer patients and survivors who are currently on hormone therapy (as adjuvant therapy).

*For more information and to register, call Nina Foley, LCSW  
(516) 877-4315 or [nfoley@adelphi.edu](mailto:nfoley@adelphi.edu).*

---

### **SUPPORT GROUP FOR SPANISH SPEAKING WOMEN**

#### **Cafecito - \*Virtual\***

A Spanish-language Support Group for breast cancer patients who have completed treatment. This group meets twice monthly via zoom.

#### **Cafecito**

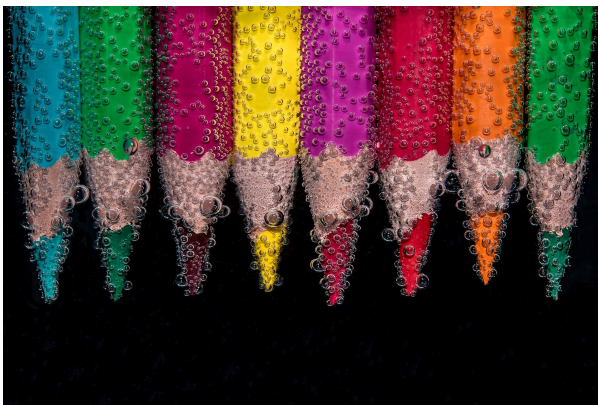
Cafecito es un grupo de apoyo en español para sobrevivientes de cáncer del seno que han terminado su tratamiento de quimioterapia o radiación.

***Call Angela M. Papalia, LMSW (516) 877-4329.***

***Llame a Angela M. Papalia, LMSW (516) 877-4329.***

---

### **ONLINE CREATIVE ARTS WORKSHOPS**



Our (4) week creative arts workshops empower participants to express themselves using art. This therapeutic program offers a safe place to communicate your

thoughts, feelings, concerns, problems, hopes and dreams. Our professional staff guides you through different exercises and discussions helping you to find ways to gain personal insight and develop new coping skills.

For information on future workshops, please call **Angela M. Papalia, LMSW** at **(516) 877-4329** or email [apapalia@adelphi.edu](mailto:apapalia@adelphi.edu).

Our creative arts workshops are facilitated by **Angela M. Papalia, LMSW**, Assistant Director for the Adelphi Breast Cancer Program along with **Kimberly Newman, BFA**, Communications and Marketing Coordinator for the Adelphi Breast Cancer Program.

---

## Adelphi Breast Cancer Hotline: 800.877.8077

ADELPHI NEW YORK STATEWIDE  
BREAST CANCER HOTLINE & SUPPORT PROGRAM

- ♦ professional counseling
- ♦ peer support
- ♦ advocacy
- ♦ community outreach
- ♦ workshops
- ♦ health referrals



*All services are free and confidential*

**HOTLINE** (Hablamos Español)

**800.877.8077**

available 9 am - 9 pm

[breast-cancer.adelphi.edu](http://breast-cancer.adelphi.edu)

The Adelphi Breast Cancer Program is here to help, listen and support you and your family. If you or someone you love has been diagnosed with breast cancer, is experiencing difficulty navigating the health system, looking for vital community resources, or want to talk, please call us at: **800.877.8077** or text us at **516.262.3263**. Our licensed Social Workers, and trained volunteers are here to help you cope and are available from 9 AM to 9 PM 365 days a year. Calls to the hotline are answered in both English and Spanish. Support is a call or text away.

---

## WE ARE HIRING!



The Adelphi NY Statewide Breast Cancer Hotline & Support Program is hiring a **full time social worker**.



Please visit the link below to learn more about this position and to apply!

**SOCIAL WORKER - Grant**

**[click here](#)** for more information and to apply.

---

## News and Press Releases

November 12, 2024

**Join the Adelphi Breast Cancer Program's Warriors Book Club on Monday, November 18**



On Monday, November 18, from 7 pm - 8 pm, join the Adelphi Breast Cancer Program's Warriors Book Club on Zoom for a lively and uplifting discussion of Colm Tóibín's New York Times bestselling novel, "Brooklyn."

**[Click here](#)** to read the press release

**READ MORE**

---

## Support the Janet Fine Fund for Breast Cancer





**Janet Fine** had an impactful experience as a volunteer for over ten years with the Adelphi NY Statewide Breast Cancer Hotline and Support Program. She dedicated her time to helping countless individuals on the Hotline. Janet also conducted community outreach and participated in media opportunities in order to share her experience and provide hope to others. Not only did she touch the lives of people reaching out for support on the hotline, Janet also developed deep, long-term friendships with her fellow volunteers.

Given her experience with the Adelphi NY Statewide Breast Cancer Hotline & Support Program her daughters, Lisa Horowitz and Julie Grasso, have created **The Janet Fine Fund for The Breast Cancer Hotline** to give individuals the opportunity to receive support and grow, as she had. *“Establishing this fund will ensure the continued valued resource of the Hotline. Janet was dedicated to her Monday Hotline time slot and was always available to train new volunteers to promote the same dedication and commitment that she exhibited.”* – Lisa and Julie.

## [Donate Now](#)

---

## Support the Adelphi Breast Cancer Program



### **DO YOU LIKE A CHALLENGE?**

There are so many different ways you can help support, boost awareness, and raise funds for the **Adelphi NY Statewide Breast Cancer Hotline & Support Program**. Get ready to create your very own **FUN**draiser!

Thank you to everyone who has supported us with facebook fundraisers, drive-in movie and exercise events. The annual “power of pink” jewelry collection, pink pumpkins, pink patch and halloween fundraisers have proven successful.

Your fundraising efforts allow us to provide outreach at community health fairs, host volunteer trainings, offer support groups, individual counseling, present educational forums and refer women to free or low-cost mammography screening.

Click here to [START YOUR FUNDRAISER](#) and fill out the form. We will share your fundraiser over social media, our website and in our monthly newsletter. We want to help you have a successful campaign!

**DONATE**

[Click here](#) to help support the **Adelphi Breast Cancer Program**. Without funding, our program will no longer be able to provide life-saving services to those who are truly in need. Please make a tax-deductible donation today, so that we may be there for the breast cancer community.

---

**The Adelphi Breast Cancer Program  
wishes our volunteers  
the happiest of birthdays!**



**Let's Stay In Touch**

Contact our Hotline, Visit our Website, Follow us on Social Media

Follow us on Social Media and online to see photos of our wonderful volunteers at our outreach events, stay up-to-date on programs, forums and support groups. Read news articles and new studies on breast cancer, read inspiring stories from our volunteers, watch our events live on facebook and see the wonderful people and businesses that support us.



### **SOCIAL MEDIA**

[facebook](#), [twitter](#), [pinterest](#), [youtube](#), [instagram](#)

### **WEBSITE**

[breast-cancer.adelphi.edu](http://breast-cancer.adelphi.edu)

### **HOTLINE**

800.877.8077 - We are here for you 365 days a year!

---

## **Thank you to all our sponsors**

(Listed below in alphabetical order)

Alpern Family Foundation Inc.

Kat's Ribbon of Hope

Manhasset Women's Coalition Against Breast Cancer

The Junior Coalition of the Manhasset Women's Coalition Against Breast Cancer

The Marilyn Lichtman Foundation

Nassau County Office for Housing and

Community Development

New York State

Northwell Health Cancer Institute

Pink Aid

Please visit our website at [www.myorganization.com](http://www.myorganization.com).  
Donate to our cause at [www.myorganization.com/donate](http://www.myorganization.com/donate).

---