



Adelphi NY Statewide Breast Cancer Hotline & Support Program  
Adelphi University, School of Social Work  
1 South Ave., PO Box 701, Garden City, NY 11530  
**Office:** 516.877.4320 • **Hotline:** 800.877.8077 • **breast-cancer.adelphi.edu**

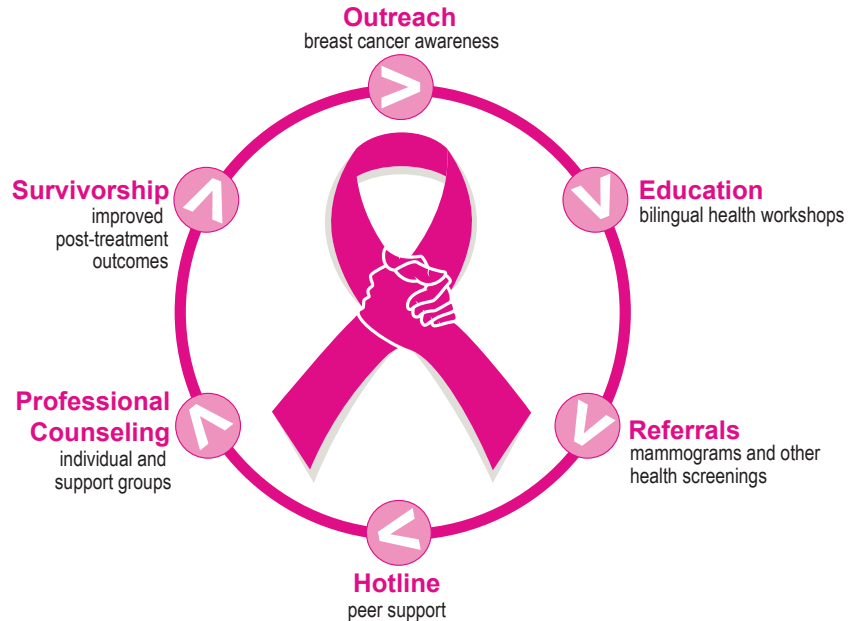
**Adelphi NY Statewide Breast Cancer Hotline & Support Program's** mission is to educate, support, empower, and advocate for breast cancer patients, professionals, and the community.

In 1986, with funding from New York State, we expanded the hotline to all New Yorkers and today, we have the oldest toll-free **Breast Cancer Hotline** in the country. The hotline is available daily from 9 AM to 9 PM and is staffed by professionally trained volunteers; all are breast cancer survivors. Hotline calls include Chester, Williamsville, Saratoga Springs, Lily Dale, New Rochelle, Mineola, Hempstead, Babylon, Brentwood, and more. We receive referrals from the following hospitals: St. Francis, Glen Cove, NYU Langone, Stony Brook, Southside, Northwell, Lawrence, Brooklyn, Columbia Presbyterian, Northwell LIJ, Nassau University Medical Center, Memorial Sloan Kettering Cancer Center, and more.

**Support groups** are facilitated for patients who are newly diagnosed with breast cancer, women (and men) with metastatic or Stage 4 disease, women under 40, creative arts, and a Spanish-language group. In the past we have held support groups for women who have tested positive for the BRCA 1 and BRCA 2 genes, children whose mothers had breast cancer, and recently, a warriors book club.

Since 1997, our program has been integral in supporting medically underserved communities with education and access to care in order to improve health outcomes. We offer **Licensed Social Work Services and Patient Navigation** (in English and Spanish) including counseling, crisis intervention and community referrals in person, via phone, and the HIPAA compliant version of ZOOM. Our **Sisters United in Health** project provides outreach, workshops, and mammography referrals, in partnership with the New York Cancer Services Program, which leads to early detection and treatment.

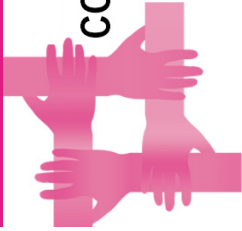
We host survivorship events year-round. **Forums** are focused on medical, legal, and wellness topics and are facilitated by experts in various fields. In October, our **Celebration of Survivorship** features a panel of speakers and provides inspiration and empowerment. All of our services are completely **free** and **confidential**.



## FUTURE PLANS

- Strategic Planning 2024 - 2028
- Promote Texting to Hotline (*launched March 2024*)
- Provide Licensed Social Work Services (*both individual and support groups*)
- Host Educational Forums (*both online & in person*)
- Provide Community Outreach, Health Workshops and Referrals
- Marketing Initiatives (*including a new video series and website redesign*)

# Adelphi Breast Cancer Program - Our Impact In 2024



COMMUNITY OUTREACH

**90** EVENTS

raising breast cancer awareness

**REACHING OVER 6,000** individuals.

EDUCATED **OVER**

**700**

breast cancer survivors, healthcare professionals, and medically underserved women by providing educational forums and breast health workshops.



EARLY DETECTION

**100** REFERRALS FOR

free or low-cost mammography screening through the New York State Cancer Services Program, Federally Qualified Health Centers (FQHCs) and other providers.



PATIENT SUPPORT

PROVIDED LICENSED COUNSELING SERVICES FOR

**1,000** patients.



SURVIVORSHIP PROGRAMS

FOR **OVER 500** patients

which empowers patients and leads to improved post-treatment outcomes.



WEBSITE REACH

**OVER 15,000** pageviews.

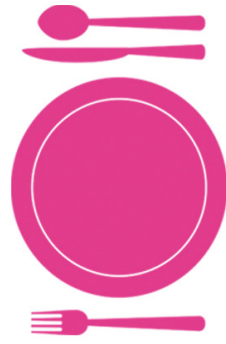


MEALS PROVIDED TO **OVER**

**160**

MEDICALLY UNDERSERVED BREAST CANCER PATIENTS.

*This was made possible with support from Pink Aid.*



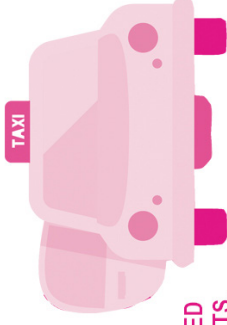
TRANSPORTATION

PROVIDED TO

**140**

MEDICALLY UNDERSERVED BREAST CANCER PATIENTS.

*This was made possible with support from the Manhasset Women's Coalition Against Breast Cancer.*



**OVER**

**2,200**

REFERRALS PROVIDED FOR FINANCIAL ASSISTANCE AND FEDERAL ENTITLEMENT PROGRAMS.

