



ADELPHI NY STATEWIDE
BREAST CANCER HOTLINE & SUPPORT PROGRAM

800.877.8077 • breast-cancer.adelphi.edu

JUNE is *National*
CANCER
SURVIVOR
MONTH



June 2025 - Newsletter

[View Website](#)

June is National Cancer Survivor Month

National Cancer Survivor Month is a time to increase awareness about life after cancer. Volunteers at the Adelphi NY Statewide Breast Cancer Hotline & Support Program know what you are going through. They are ready to offer information regarding mammography screening referrals, treatment, support services and survivorship resources.

We are here to answer your questions, match you with someone who understands what you are going through, and provide resources in the community you live in. Our licensed social workers and volunteers are just a call **1-800-877-8077** or text **516.262.3263** away.

WATCH NOW!

Kim Callahan & Anthony Pizzariello's Story

Part of the Survivorship, Treatment, Education and Peer Support (STEP) Program



This inspirational [video](#) shares the story of Kim, who was diagnosed with breast cancer at just 30 years old. What followed was a life-changing journey—through treatment, uncertainty, and ultimately, healing.

In this powerful and deeply personal video, Kim reflects on how cancer changed her, the strength it took to ask for help, and how her partner, Anthony, stood by her with quiet, unwavering support.

Now, years later, Kim is giving back through the **Adelphi NY Statewide Breast Cancer Hotline & Support Program**—offering hope and guidance to women facing similar paths. Her story is a reminder that while breast cancer may always be part of her life, it doesn't define her. Strength, love, and a deep appreciation for life shine through.

The Survivorship Treatment, Education and Peer Support (STEP) Program provides psychosocial support services for Young Breast Cancer Survivors, Metastatic Breast Cancer patients and their families through individual and family social work services. The STEP Program also provides educational workshops and forums, provider education, a video series, referrals for free or low-cost mammography screening, and peer support.

Pride Month (June 1, 2025 - June 30, 2025)



RISE UP: Pride in Protest

As we welcome the month of June, we recognize **National Cancer Survivors Day and Pride month**, celebrating every single individual and their extraordinary uniqueness. Here at the Adelphi Breast Cancer Program, we honor, accept and respect all who courageously face breast cancer every single day. [Click here](#) to visit us online.

We are here for you!

HOTLINE: 800.877.8077 • **TEXT:** 516.262.3263

CELEBRATION OF SURVIVORSHIP 2025

****Event Details Coming Soon****



[Click here](#) to become an event sponsor

Sponsorship Levels:

Visionary \$5,000

- Prime company name and logo placement in our digital journal. Please send us your mission statement to be included in the journal. You will also receive a **full page ad** (5.5w x 8.5h - inside cover and back cover are currently available), ***please note all ads must be submitted by September 15, 2025.*** Submit camera-ready artwork. E-mail a PDF or .jpg to **knewman@adelphi.edu**. If you need assistance with your ad design, please contact Kim Newman at **knewman@adelphi.edu**.
- Full-color large logo to be displayed on the event webpage with a link to the company website.
- Social media promotion with tags, posts, mentions (four posts from September to October).
****After receiving sponsorship payment until the date of the event.***
- Company will be listed in the event press release
(payment must be submitted by September 15, 2025).
- Company logo to be listed on promotional emails.
****Promotional emails will contain company names after receiving sponsorship payment.***
- Reserved seating for four guests to attend.
- Recognition at the event podium during the event.

Ambassador \$2,500

- Company name and logo will be listed as an official event sponsor in our digital journal. Please send your mission statement to be included in the journal. You will also receive a **full page ad** (5.5w x 8.5h), **please note all ads must be submitted by September 15, 2025**. Submit camera-ready artwork. E-mail a PDF or .jpg to knewman@adelphi.edu. If you need assistance with your ad design, please contact Kim Newman at knewman@adelphi.edu.
- Full-color medium sized logo to be displayed on the event webpage with a link to the company website.
- Social media promotion with tags, posts, mentions (two posts in October).
***After receiving sponsorship payment until the date of the event.**
- Company will be listed in the event press release
(payment must be submitted by September 15, 2025).
- Company logo to be listed on promotional emails
***Promotional emails will contain company name after receiving sponsorship payment.**

Ally \$1,000

- Company name and logo will be listed as an official event sponsor.
- You will receive a **half page ad** (5.5w x 4.25h), **please note all ads must be submitted by September 15, 2025**. Submit camera-ready artwork. E-mail a PDF or .jpg to knewman@adelphi.edu. If you need assistance with your ad design, please contact Kim Newman at knewman@adelphi.edu.
- Full-color small logo to be displayed on the event webpage with a link to the company website.
- Social media promotion with tags, posts, mentions (on one post in October).
***After receiving sponsorship payment until the date of the event.**
- Company will be listed in the event press release
(payment must be submitted by September 15, 2025).
- Company name to be listed on promotional emails.
***Promotional emails will contain company name after receiving sponsorship payment.**

Supporter \$500

- Company name and logo will be listed as an official event sponsor.
- You will receive a **quarter page ad** (2.75w x 4.25h), **please note all ads must be submitted by September 15, 2025**. Submit camera-ready artwork. E-mail a PDF or .jpg to knewman@adelphi.edu. If you need assistance with your ad design, please contact Kim Newman at knewman@adelphi.edu.
- Company name to be displayed on the event webpage.
- Company name to be listed on promotional emails
***Promotional emails will contain company name after receiving**

sponsorship payment.

[Click here](#) to reserve space in our digital journal

- **Full Page** (5.5w x 8.5h) **\$200.00**
(Educational Forums)
 - **Half Page** (5.5w x 4.25h) **\$100.00**
(One hour session with a social worker (English or Spanish))
 - **Quarter Page** (2.75w x 4.25h) **\$50.00**
(Food card for an underserved breast cancer patient)
 - **Listing in Journal** **\$25.00**
(Gift card for an underserved woman at the completion of her mammogram)
-

THE WARRIORS BOOK CLUB MEETING - June 30, 2025

The All-Girl Filling Station's Last Reunion
by Fannie Flagg

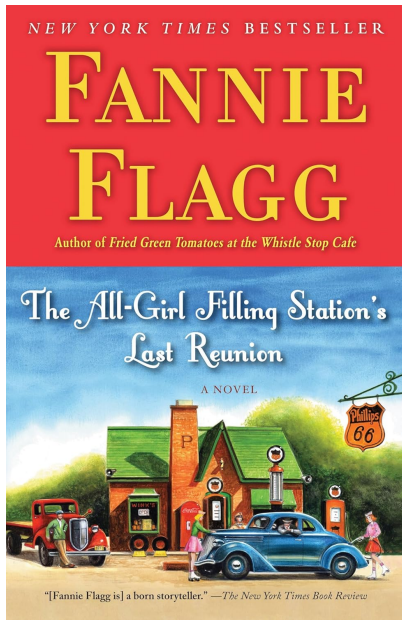


Participation in our **Warriors Book Club** will provide you with a wonderful, feel-good, uplifting and inspirational experience! The purpose of the Warriors Book Club is to support people in the community impacted by Breast Cancer.

Monday, June 30, 2025

Join us on zoom from 7:00 pm - 8:00 pm

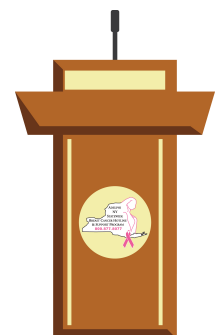
On **June 30th** we will be discussing the book **The All-Girl Filling Station's Last Reunion** by **Fannie Flagg**.



Having just married off her last daughter, Sookie Poole anticipates a relaxing future with her husband, Earle. The only thing left to contend with is her mother, the formidable and imposing Lenore Simmons Krackenberry. Sookie's life takes an unexpected turn when she discovers a shocking secret about her mother's past, making her question everything about her family and herself. Sookie begins a search for answers that takes her to California, the Midwest, and back in time, to the 1940s, when an irrepressible woman named Fritz takes on the job of running her family's filling station. Ultimately, through Fritz's experiences, Sookie gains new perspectives and finds answers to lifelong questions.

REGISTRATION: For more information and to register for our **June 30, 2025** Warriors Book Club Meeting on zoom, please contact Nina Foley, LCSW at **516-877-4315** or email nfoley@adelphi.edu.

UPCOMING FORUMS



Join the Adelphi NY Statewide Breast Cancer Hotline & Support Program on **Wednesday, June 11, 2025** for an intimate discussion on Palliative care. Palliative care is a medical discipline aimed at improving the quality of life for patients with a

serious, life-limiting, and advanced illness. Join us to hear an expert panel who will discuss this important topic and provide their expertise in accessing and navigating Palliative Care Services.

Our speakers include **Isaac Hardoon, DO**, Chief physician of NYCBS Palliative Care Team, **Maria Lever, LCSW**, Licensed Clinical Social Worker and Clinical Supervisor of JASA'S Palliative Care Supportive Services and the Long Island Center for Dignity and Support and **Lori Hardoon, LCSW**, Licensed Clinical Social Worker and Senior Director of JASA'S Palliative Care Supportive Services and the Long Island Center for Dignity and Support.

This program will be moderated by **Angela Papalia, LMSW**, Assistant Director of the Adelphi Breast Cancer Program and will be offered over ZOOM.

Date: Wednesday, June 11, 2025

Time: 6:00 pm - 7:30 pm

Place: Zoom

[Click here](#) for more information and to register for the forum
Once registered you will receive an email with the zoom link.



Join us in-person at Adelphi University on a creative adventure. Participants will learn ways to “**Seas The Day.**” This is a fun play on words encouraging participants to relax and make the most of the summer months by finding new ways to unwind. We will be working with a variety of different techniques and mediums. All levels are welcome to join and we invite you to let go, relax and create your individual masterpiece. **This program is open to breast cancer survivors and caregivers.**

Date: Tuesday, July 8, 2025

Time: 10:00 am - 11:30 am

Place: Adelphi University

[Click here](#) for more information and to register for this forum.

Space is limited to 50 participants. Once registered you will receive a confirmation email with event details.

30/30 EXERCISE CLASS - Open to anyone impacted by breast cancer



Join the Adelphi Breast Cancer Program for our **30/30 Exercise Class**
30 minutes of spin/cardio followed by 30 minutes of a combination of hand-held weights and bodyweight exercises for strength and sculpting.

This program is free. You must register to attend.

Date: Friday, July 11, 2025

Time: 6 - 7 pm

Place: Adelphi University - Woodruff Hall Studio
One South Avenue, Garden City, NY 11530-9720
([Click here](#) for directions)

Participants should bring comfortable clothing, sneakers, bottle of water & towel.

For more information and to register for our 30/30 Exercise Class,
please contact Nina Foley at **516.877.4315** or email at nfoley@adelphi.edu.

SUPPORT GROUPS



[Click here](#) to see our support group schedule.

To participate in one of the listed support groups please call our Hotline at **800.877.8077** or email breastcancerhotline@adelphi.edu to pre-register. **All groups are free but registration is required. All groups are facilitated by a licensed social worker.**

If you are interested in a support group or service that is not listed, please contact Nina Foley LCSW: nfoley@adelphi.edu.

All groups are facilitated by a licensed social worker of the Adelphi Breast Cancer Program. These programs are supported by grants from the Alpern Family Foundation, Cooperative Agreement DP 24-0061 from the Centers for Disease Control and Prevention, Kat's Ribbon of Hope, Marilyn Lichtman Foundation, New York State, Northwell Health Cancer Institute and Pink Aid.

Drop-In Support Group – Virtual

Young Women's Drop-In Support Group – Under 45 years of age *Virtual

This group will address the unique needs of young women with breast cancer and will meet via zoom on Tuesdays from 7 p.m. – 8 p.m.

To register & to receive the zoom link, please contact Nina Foley LCSW at: 516.877.4315 or nfoley@adelphi.edu.

Drop-In Support Group – Virtual

Newly Diagnosed Drop-In Support Group – *Virtual*

This group is for women who are newly diagnosed with breast cancer and will meet via zoom on Fridays from 12 p.m. – 1 p.m.

To register & to receive the zoom link, please contact Angela Papalia LMSW at: 516.877.4329 or apapalia@adelphi.edu.

Drop-In Support Group – In-Person

Hormone Therapy Drop-In Support Group – *In-Person*

Ongoing, monthly support group will meet in person from 6 p.m. - 7 p.m. This support group is for breast cancer patients and survivors who are currently on hormone therapy (as adjuvant therapy).

For more information and to register, please contact Nina Foley LCSW at: 516.877.4315 or nfoley@adelphi.edu.

Ongoing Support Group – Virtual

Stage 4 Breast Cancer Support Group – *Virtual*

Men and women with Stage 4 Metastatic Breast Cancer are welcome to join an ongoing twice-monthly group via zoom to share information, feelings, hopes and coping strategies.

For more information and to register, please contact Lois Goetz, LMSW, ACSW at: 516.877.4347 or goetz@adelphi.edu.

SUPPORT GROUP FOR SPANISH SPEAKING WOMEN

Cafecito - *Virtual*

A Spanish-language support group for breast cancer patients and survivors. This group meets every other week via zoom.

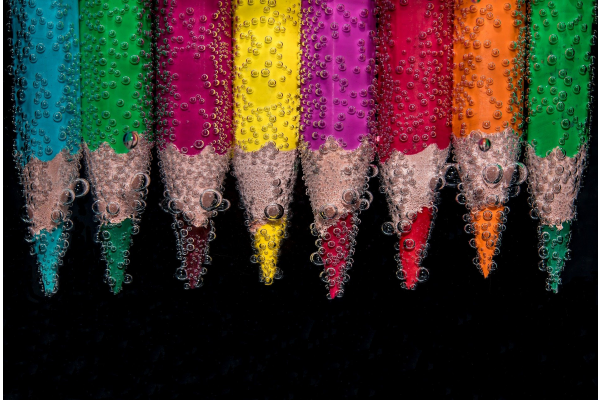
Cafecito

Un grupo de apoyo para pacientes y sobrevivientes de Cancer del seno.

Call Angela M. Papalia, LMSW (516) 877-4329.

Llame a Angela M. Papalia, LMSW (516) 877-4329.

ONLINE CREATIVE ARTS WORKSHOPS



Our (4) week creative arts workshops empower participants to express themselves using art. This therapeutic program offers a safe place to communicate your thoughts, feelings, concerns, problems, hopes and dreams. Our professional staff guides you through different exercises and discussions helping you to find ways to gain personal insight and develop new coping skills.

For information on future workshops, please call **Angela M. Papalia, LMSW** at (516) 877-4329 or email apapalia@adelphi.edu.

Our creative arts workshops are facilitated by **Angela M. Papalia, LMSW**, Assistant Director for the Adelphi Breast Cancer Program along with **Kimberly Newman, BFA**, Communications and Marketing Coordinator for the Adelphi Breast Cancer Program.

WE ARE HIRING!

Full-Time Bilingual Social Worker

The Adelphi NY Statewide Breast Cancer Hotline & Support Program is hiring a **full-time bilingual social worker**. This position will provide bilingual counseling (in-person and virtually) to women and families coping with Breast Cancer.



Please visit the link below to learn more about this position and to apply!

FULL-TIME BILINGUAL SOCIAL WORKER

[click here](#) for more information and to apply.

NEWS AND PRESS RELEASES

A Virtual Discussion on Demystifying Palliative Care with the Adelphi Breast Cancer Program

What Patients Need to Know About Accessing and Navigating Supportive Services



On **Wednesday, June 11 at 6 PM**, the Adelphi NY Statewide Breast Cancer Hotline & Support Program will host a virtual forum titled "Demystifying Palliative Care: An Intimate Discussion About Accessing and Navigating Services." The event is presented in collaboration with medical and social work professionals from New York Cancer and Blood Specialists and JASA's Palliative Care Supportive Services and the Long Island Center for Dignity and Support.

[Click here](#) to read the press release

Start Your Summer Reading Journey with Adelphi's Warriors Book Club on June 30

The Adelphi NY Statewide Breast Cancer Hotline & Support Program invites you to its next Warriors Book Club gathering on **Monday, June 30 at 7 PM** (via Zoom). This free virtual event is open to anyone impacted by breast cancer—patients, survivors, caregivers, and loved ones—seeking community, comfort, and conversation.

[Click here](#) to read the press release

Creative Forum Offers Relaxation and Expression Through Art for Breast Cancer Community

Garden City, NY — On Tuesday, July 8 at 10:00 AM, the Adelphi NY Statewide Breast Cancer Hotline & Support Program will host an in-person creative forum designed to offer participants a calming, meaningful outlet through art.

Titled "Seas the Day" as a playful nod to the upcoming summer months, the forum invites participants to embrace the season by finding new ways to unwind. During this 90-minute session, attendees will embark on a creative journey using a variety of artistic techniques and mediums designed to foster mindfulness and promote relaxation. Participants will have the opportunity to create their own unique masterpieces while building connections within the community.

[Click here](#) to read the press release

READ MORE

Cancer & Careers

15th Annual National Conference on Work & Cancer



Save the Date: Friday, June 27, 2025

Cancer and Careers' 15th annual National Conference on Work & Cancer will be held online on Friday, **June 27, 2025!** This free, daylong event brings together patients, survivors, caregivers, healthcare professionals, advocates, employers/HR, advocates and others touched by cancer to explore the complexities of balancing treatment and recovery with employment.

Click here for more information and to register.

We are here for you 365 days a year!
Adelphi Breast Cancer Hotline: 800.877.8077
or Text: 516.262.3263

ADELPHI NEW YORK STATEWIDE
BREAST CANCER HOTLINE & SUPPORT PROGRAM

- ♦ professional counseling
- ♦ peer support
- ♦ advocacy
- ♦ community outreach
- ♦ workshops
- ♦ health referrals

All services are free and confidential

HOTLINE (Hablamos Español)
800.877.8077
hotline open 9 am - 9 pm

TEXT
516.262.3263
texting available 9 am - 5 pm

breast-cancer.adelphi.edu

The Adelphi Breast Cancer Program is here to help, listen and support you and your family. If you or someone you love has been diagnosed with breast cancer, is experiencing difficulty navigating the health system, looking for vital community resources, or want to talk, please call us at: **800.877.8077** or text us at **516.262.3263**. Our licensed Social Workers, and trained volunteers are here to help you cope and are

available on the hotline from 9 AM to 9 PM 365 days a year. Calls to the hotline are answered in both English and Spanish. Texting is available from 9 AM to 5 PM. **Support is a call or text away!**

Quick question, are you following us on our socials?

The Adelphi Breast Cancer Program offers **many** different ways to stay connected. The good news is that you don't have to choose! We encourage you to connect with us across **all** our social media channels.

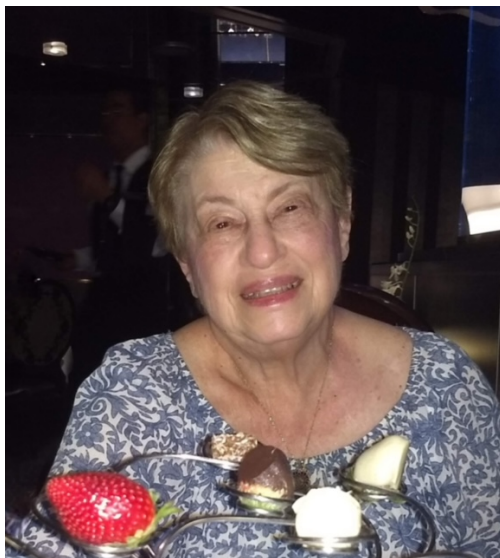
SOCIAL MEDIA



[facebook](#), [X](#), [linkedin](#), [instagram](#), [youtube](#)



SUPPORT THE JANET FINE FUND FOR BREAST CANCER



Janet Fine had an impactful experience as a volunteer for over ten years with the Adelphi NY Statewide Breast Cancer Hotline and Support Program. She dedicated her time to helping countless individuals on the Hotline. Janet also conducted

community outreach and participated in media opportunities in order to share her experience and provide hope to others. Not only did she touch the lives of people reaching out for support on the hotline, Janet also developed deep, long-term friendships with her fellow volunteers.

Given her experience with the Adelphi NY Statewide Breast Cancer Hotline & Support Program her daughters, Lisa Horowitz and Julie Grasso, have created [**The Janet Fine Fund for The Breast Cancer Hotline**](#) to give individuals the opportunity to receive support and grow, as she had. *“Establishing this fund will ensure the continued valued resource of the Hotline. Janet was dedicated to her Monday Hotline time slot and was always available to train new volunteers to promote the same dedication and commitment that she exhibited.”* – Lisa and Julie.

[**Donate Now**](#)

SUPPORT THE ADELPHI BREAST CANCER PROGRAM



Do You Like a Challenge?

There are so many different ways you can help support, boost awareness, and raise funds for the **Adelphi NY Statewide Breast Cancer Hotline & Support Program**. Get ready to create your very own **FUN**draiser!

Thank you to everyone who has supported us with facebook fundraisers, drive-in movie and exercise events. The annual “power of pink” jewelry collection, pink pumpkins, pink patch and halloween fundraisers have proven successful.

Your fundraising efforts allow us to provide outreach at community health fairs, host volunteer trainings, offer support groups, individual counseling, present educational forums and refer women to free or low-cost mammography screening.

Click here to [**START YOUR FUNDRAISER**](#) and fill out the form. We will share your fundraiser over social media, our website and in our monthly newsletter. We want to help you have a successful campaign!

DONATE

[Click here](#) to help support the **Adelphi Breast Cancer Program**.

Without funding, our program will no longer be able to provide life-saving services to those who are truly in need. Please make a tax-deductible donation today, so that we may be there for the breast cancer community.

**The Adelphi Breast Cancer Program
wishes our volunteers
the happiest of birthdays!**



THANK YOU TO ALL OUR SPONSORS

(Listed below in alphabetical order)

Alpern Family Foundation Inc.

Centers for Disease Control and Prevention

Kat's Ribbon of Hope

Manhasset Women's Coalition Against Breast Cancer

The Junior Coalition of the Manhasset Women's Coalition Against Breast Cancer
The Marilyn Lichtman Foundation
Nassau County Office for Housing and Community Development
New York State Department of Health
Northwell Health Cancer Institute
Pink Aid

Please visit our website at breast-cancer.adelphi.edu
Donate to our cause at breast-cancer.adelphi.edu/donate
